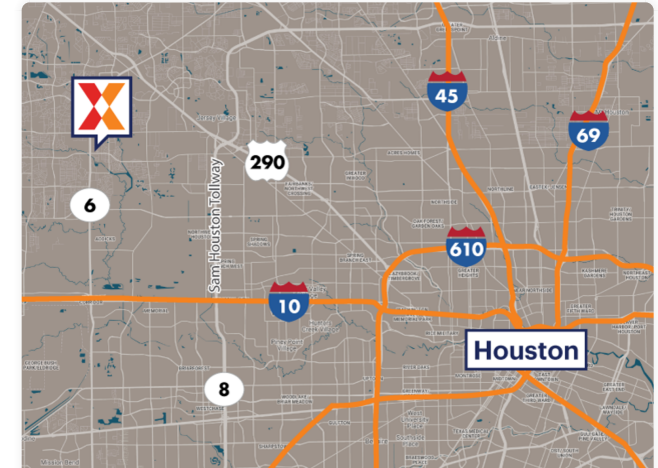
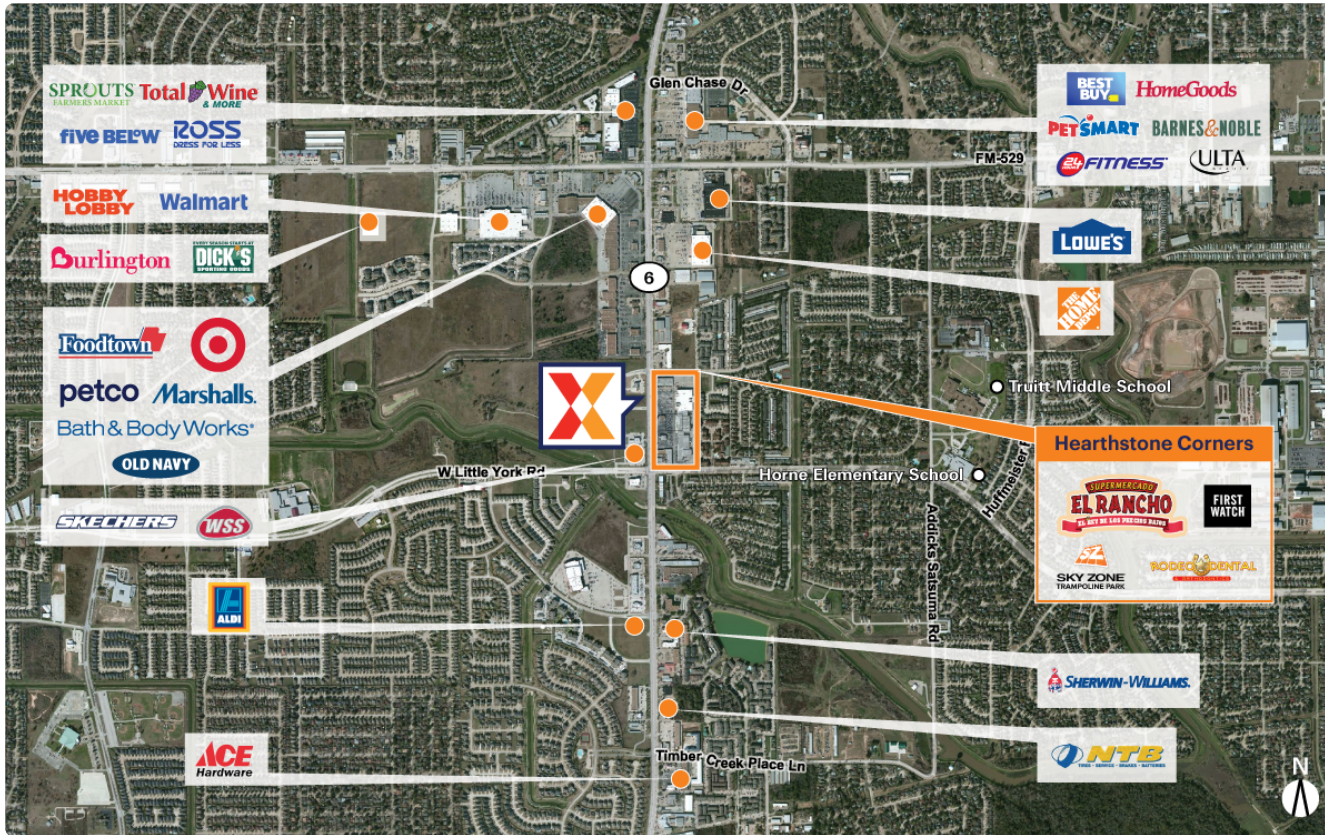


# Hearthstone Corners

6106-6194 Highway 6 North | Houston, TX 77084

Harris County Houston-Pasadena-The Woodlands, TX 208,147 Sq Ft

29.8696, -95.6441



Demographics	1 Mile	3 Miles	5 Miles
Population	22,538	149,214	335,922
Daytime Pop.	16,391	127,452	293,953
Households	7,904	49,816	110,125
Income	\$104,229	\$114,988	\$121,336

Source: Synergos Technologies, Inc. 2024

Strong anchor tenant lineup including El Rancho, Amped Fitness, Sky Zone and XL Parts

High visibility at the intersection of Hwy 6 from 50K+ vehicles daily and W Little York Rd with 30K+ vehicles daily (Kalibrate 2025)

Surrounded by a dense population of 149K+ within 3 miles

Located in the heart of Copperfield's retail node with more than 2M Sq Ft of retail

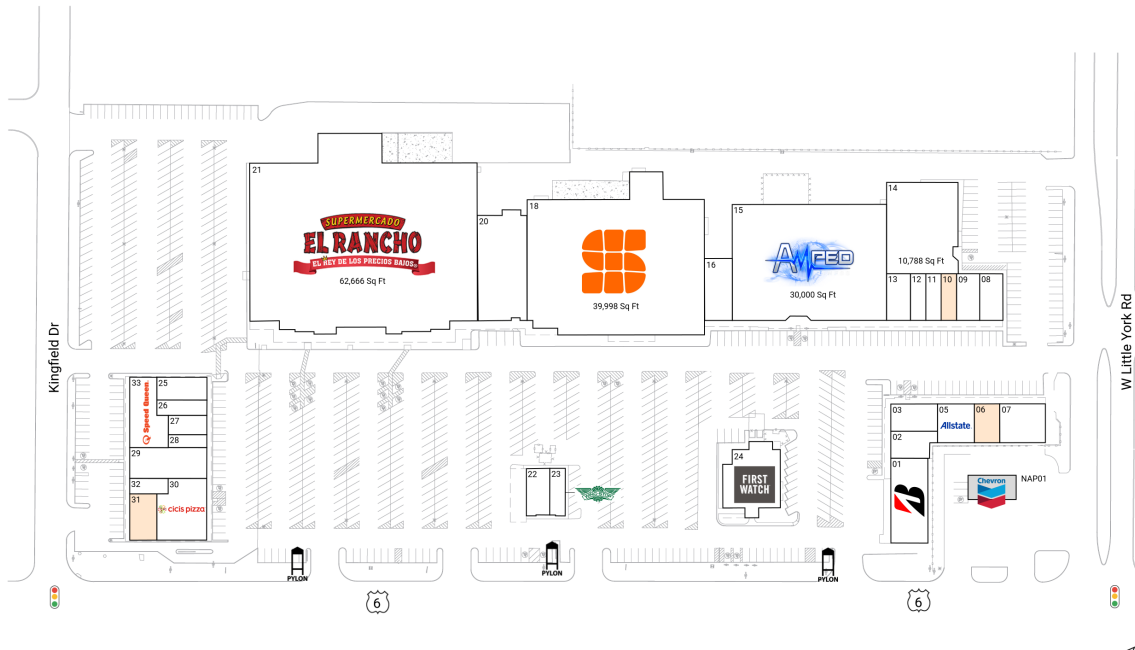


# Hearthstone Corners

6106-6194 Highway 6 North | Houston, TX 77084

Harris County Houston-Pasadena-The Woodlands, TX 208,147 Sq Ft

29.8696, -95.6441



## Available Spaces

06	1,654 Sq Ft	360°	31	2,100 Sq Ft	360°
10	1,200 Sq Ft	360°			

## Current Tenants

Space size listed in square feet

01	Bridgestone	5,280
02	Water Tree Hwy 6	2,000
03	Nemo & Friends Aquariums	2,000
05	Allstate Insurance	1,973
07	Yuyo Flagship Production Studi	2,984
08	Postal 'N' Shipping	1,800
09	Aloha Hawaiian BBQ Express	1,790
11	Lan's Nails	1,185
12	Savvy's by Uwealth Acamedicare	1,200
13	Clinica Familiar Amor y Vida	1,770
14	XL Auto Parts	10,788
15	Amped Fitness	30,000
16	Locomotion Early Learning Cent	2,880
18	Sky Zone Indoor Trampoline Park	39,998
20	Rodeo Dental	8,640
21	El Rancho Supermercado	62,666
22	Brisket and Rice	1,680
23	Wingstop	1,200
24	First Watch	4,500
25	Fort Liquor	1,928
26	Hollywood Eyebrows	1,283
27	La Michoacana Los Primos	1,250
28	Elite Tax, Travel & Financial	754
29	El Oceano Seafood	4,000
30	Cicis	4,900
32	B&B'S	994
33	Speed Queen	3,750
NAP01	Chevron	0

This site plan is for illustrative and information purposes only, showing the general layout of the shopping center; and is not a legal survey. Brixmor makes no representation or warranty that the shopping center is exactly as depicted as site conditions and tenant mix are subject to change over time. 1427

